

# MONTHLY MEMBERSHIP PROGRESS REPORT

District 33 S

Results as of: 7/31/2019

GMT:

LOCATION MASSACHUSETTS

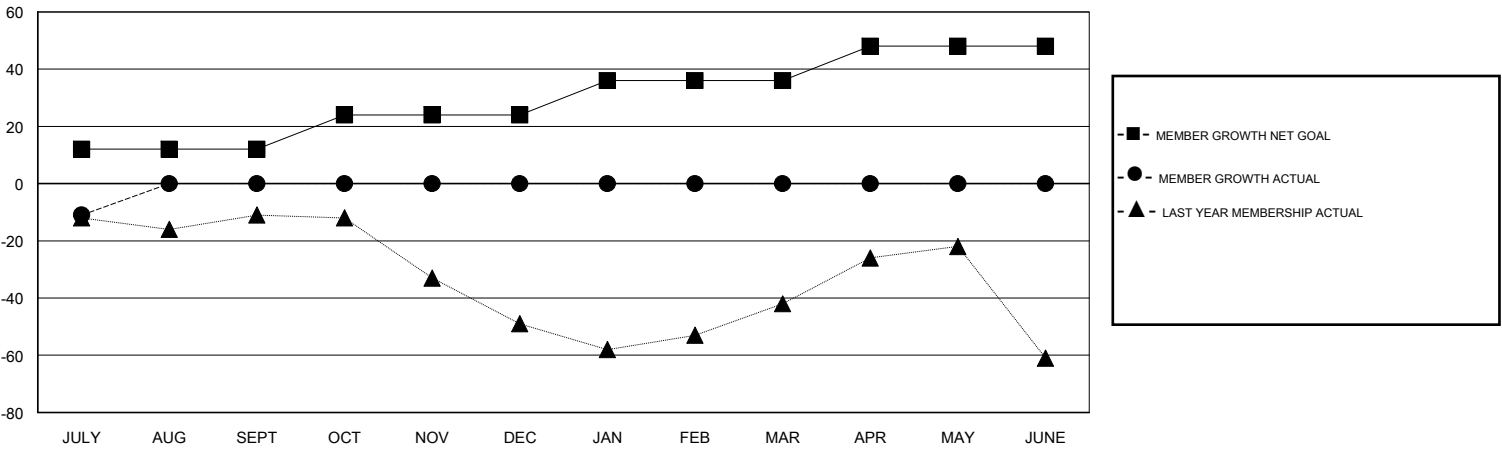
GMT CA

Clubs				Members			
RESULTS FOR 2019-2020				RESULTS FOR 2019-2020			
QUARTER	NEW CLUB GOAL	NEW CLUBS	DROPPED CLUBS	QUARTER	MEMBER GROWTH NET GOAL	MEMBER GROWTH ACTUAL	DROPPED MEMBERS ACTUAL (including transfers)
JULY/AUG/SEPT	0	0	0	JULY/AUG/SEPT	12	2	12
OCT/NOV/DEC	0	0	0	OCT/NOV/DEC	12	0	0
JAN/FEB/MAR	1	0	0	JAN/FEB/MAR	12	0	0
APR/MAY/JUNE	0	0	0	APR/MAY/JUNE	12	0	0

GOALS AND ACTUAL NEW CLUBS CUMULATIVE



GOALS AND ACTUAL MEMBERS CUMULATIVE



DROPPED CLUBS: 0	1 CLUBS OF 48 ADDED 1 OR MORE NEW MEMBERS	<b>GENDER DISTRIBUTION</b> MALE 1,066 (63.76%) FEMALE 606 (36.24%)
<b>DROPPED MEMBERS</b> DECEASED 2 CLUB CANCELLED 0 OTHER 10 <b>TOTAL 12</b>	<a href="#">CLICK HERE FOR CUMULATIVE MEMBERSHIP DATA</a>	TOTAL FAMILY UNIT MEMBERS 236 FAMILY MEMBERS PAYING HALF DUES 121